

GERMAN RESEARCH VESSELS*

* except RVs from the Ministries of Defence (1 RV), Agriculture (3 RV), Traffic (6 RV)



POLARSTERN

Last 34 years for AWI, Bremerhaven
 - Arctic & Antarctic expeditions
 - 310 days per year
 - supplies German Antarctic Station Neumayer-Station-III

Replacement for Polarstern is in process of planning. A shipyard tender was published January 2016.



METEOR

- 328 working days in 2015
 - In 2015 the dry dock overhaul ran without any problems.
 - In 2016 there was no dry dock overhaul. Neither events of special importance. At the moment minor problems with Parasound.
 - Former considerations concerning the installation of new engines are no longer being pursued.
 - The German government decided that one new research vessel will be built supposed to replace both, METEOR and POSEIDON.



SONNE

- The first year of operation was successfully accomplished without any notable failures.
 - 360 working days in 2015

Positive:

- Good usage as multidisciplinary research vessel.
- Excellent manoeuvring and sea handling qualities.
- Concepts for hangar, laboratories, cranes, winches and deck area has proved as high function value
- Heave compensating is working well.
- Anticipated problems with the A-frame haven't materialized.
- Vessel complies with ICES 209 and runs extremely silent.

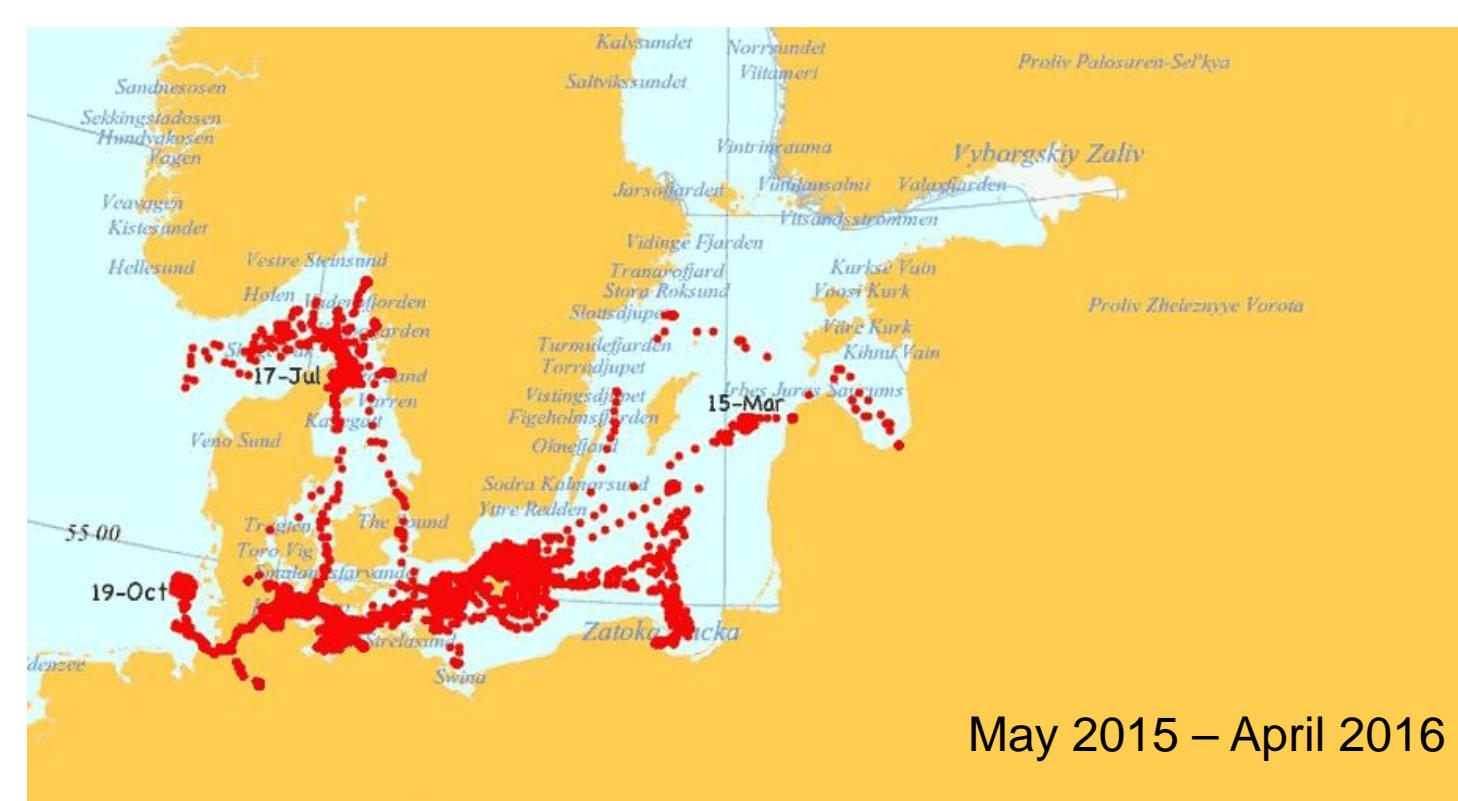
Negative:

- Despite its size the storage capacities are quite tight.
- Due to the complexity of the vessel handlings in the engine area are connected with high effort.
- Due to the operation area there are problems with the waste disposal concept.



MARIA S. MERIAN

- 267 working days in 2015
- 10 years jubilee in 2016
- Persisting problems with the POD drive (inverter and pole wheel position sensor).
- Apart from that a very reliable vessel.



- 288 working days in 2015
- Major dry dock overhaul including overhauls of the machine, the laboratories, the winches and the steelworks in 2015/16.
- Problems with legionella bacteria as result of a too high cold water temperature. However, appropriate action has been initiated already.

ALKOR

POSEIDON

- 289 working days in 2015
- 40 years jubilee in 2016
- Dry dock overhaul with extended steelwork and maintenance measures in 2015/16.
- Complete color renewal at the underwater areas (with Waterblast) in Las Palmas in March 2016.
- Withdrawal is expected for 2019. A planned newbuilding will replace POSEIDON and METEOR.



ELISABETH MANN BORGESSE



- Smooth operation without any failures in 2015 and 2016.
- Procurement of two mobile winches, one of which includes an active heave compensating.
- New development of an automatic pure water analysis with thermosalinograph and fluorometer.

- Major dry dock overhaul including new engines and diesel exhaust aftertreatment with SCR and particle filter in 2015.
- Positive experiences after the first year of operation.
- Effectiveness might be improved by a better cooperation between engine manufacturer and service providers of diesel exhaust aftertreatment.

HEINCKE

